

Pyramid Technical Consultants, Inc.
1050 Waltham Street Suite 200
Lexington, MA 02421

TEL: (781) 402-1700 ♦ FAX: (781) 402-1750 ♦ EMAIL: SUPPORT@PTCUSA.COM

USB Driver Installation for PSI devices

Authors

J.Gordon

Rev: 0.2

Date: April 28, 2008

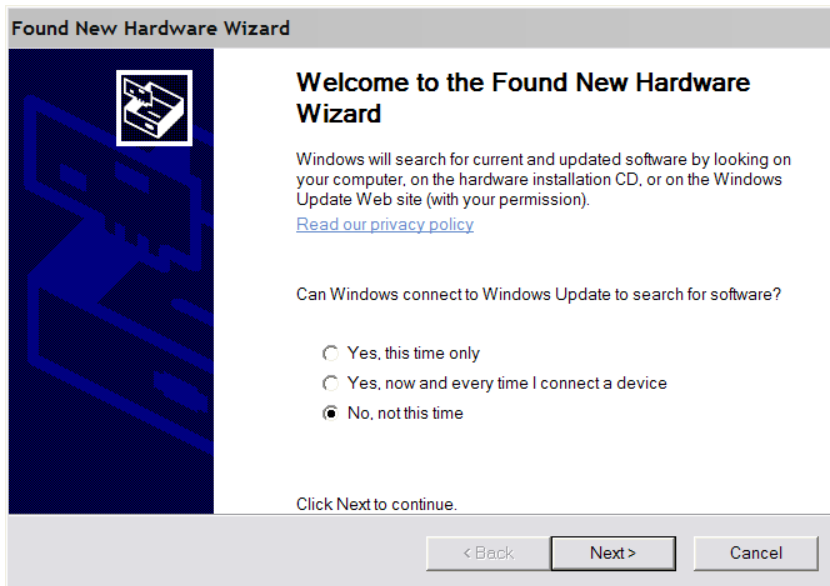
Installing the FTDI DLL Drivers

Pyramid Technical Consultants, Inc. USB-capable devices use a chip supplied by FTDI Ltd. When you use particular computer to access a particular USB-capable device for the first time, Windows will recognise it as new device from its unique combination of the FTDI vendor identification (VID), the Pyramid product identification (PID) and the unit serial number. Windows will open the “Found new hardware” wizard. The selection of files installed by the Windows wizard is guided by information in a “.INF” file. The VID/PID combination of the device must be referenced in this file to allow the driver installation to succeed. A specific version of this file, PTC.INF, covers the FTDI default VID/PID plus all the Pyramid assigned values.

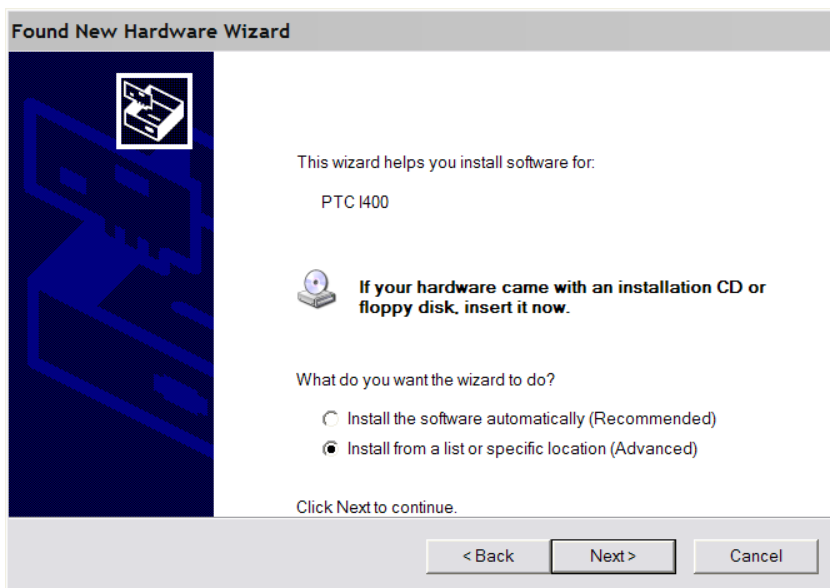
There are two types of driver for the FTDI chip, COM and DLL. It is important not to let the wizard install the COM driver, which it tends to do if you take defaults – PTC software requires the DLL driver. If you do accidentally install the COM driver, it should be completely removed before re-trying. The FTDI utility FT_clean.exe removes all driver files and cleans up the registry.

The wizard should be run as follows:

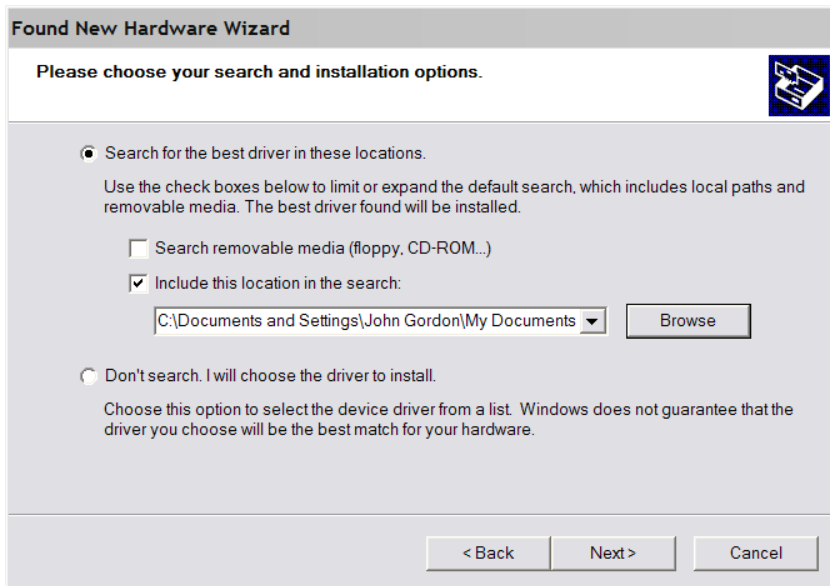
- 1) Don't let the wizard look for drivers on the internet.



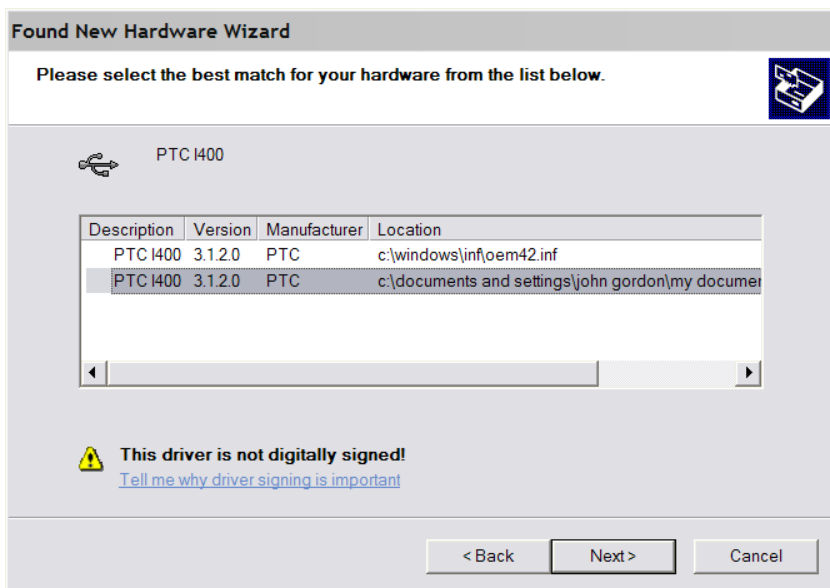
2) Select installation from a specific location.



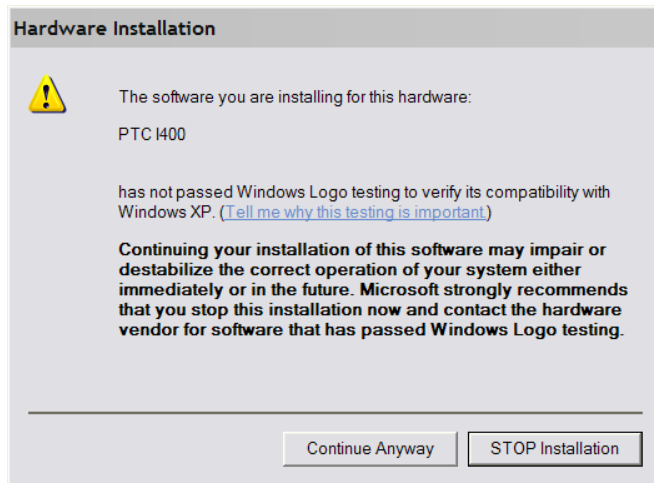
3) Using the browse option, navigate to the location of the PTC.INF. The driver files and uninstall files should be in the same directory as PTC.INF.



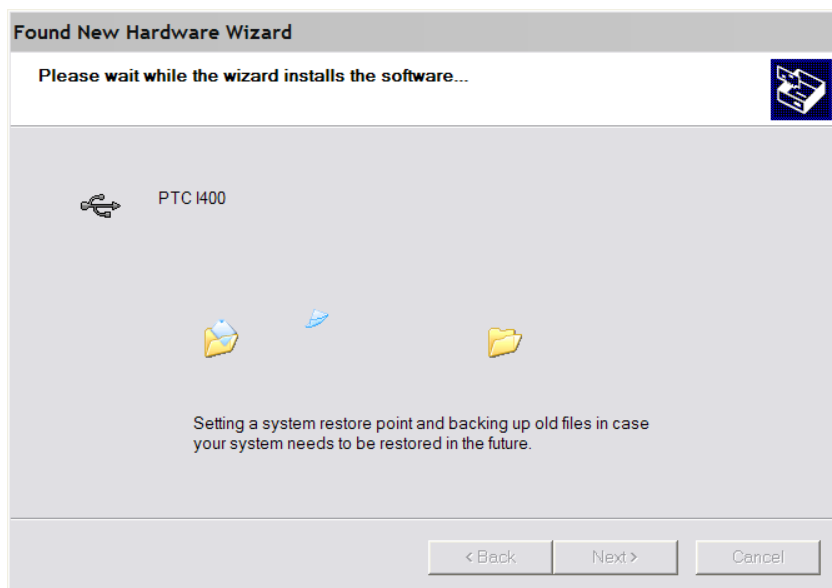
The wizard may find other .inf files which also have valid entries, depending on the history of your PC. Select the ptc.inf file. If there is only one valid entry, it will proceed directly to the installation phase.

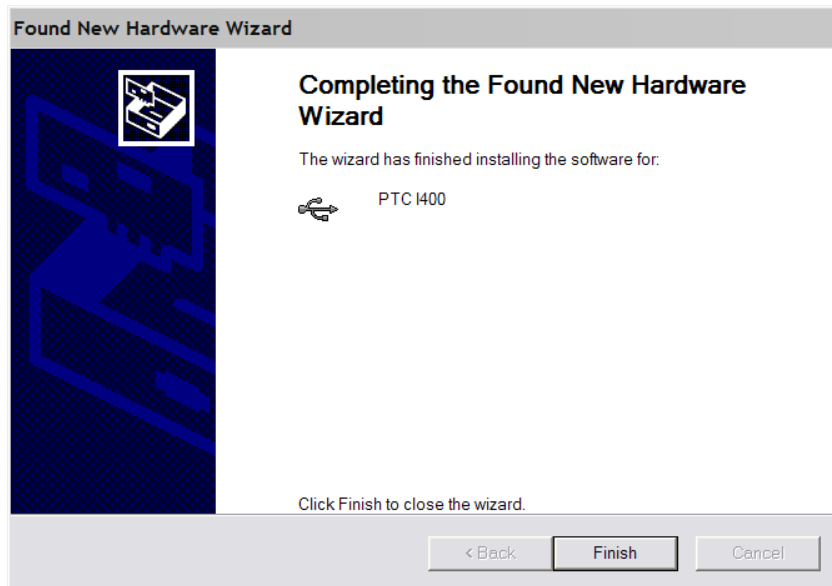


4) Allow the installation to continue despite the driver not having the Windows Logo approval.



5) The driver installation should now occur. When it is complete the “Your new hardware is installed and ready to use” message balloon should appear.





You may be asked to reboot your computer at this stage,

< end >