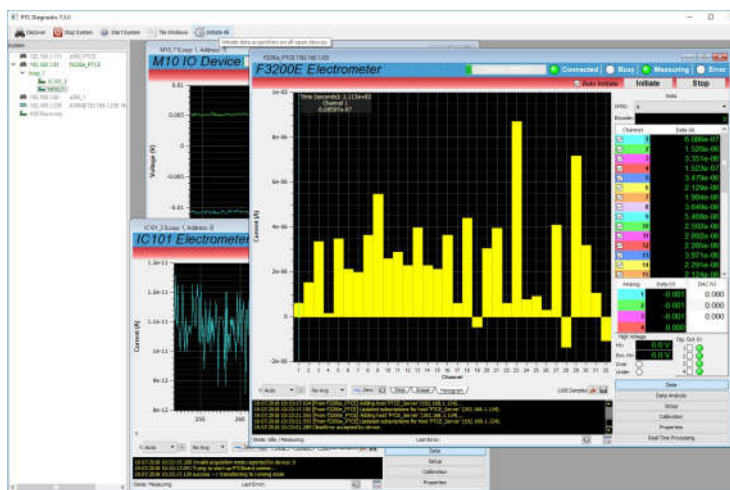


TN0009

Linux Distributions of PTCDiagnosticG2

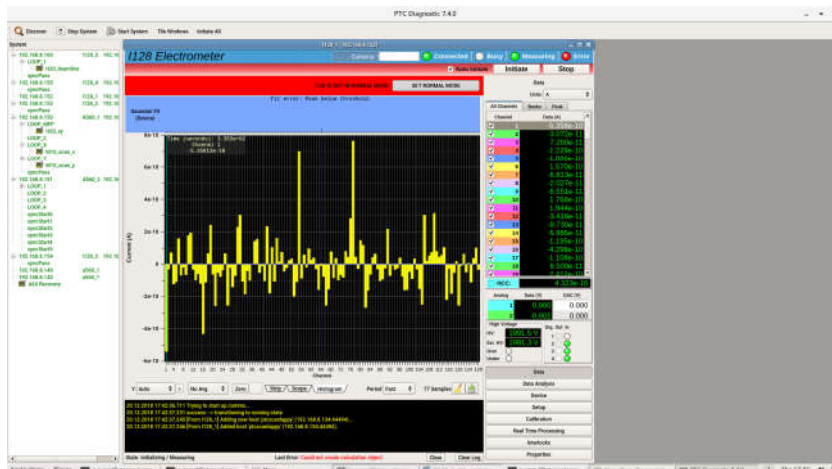
PTCDiagnosticG2

The PTCDiagnosticG2 software is a general purpose control, display and record host program that connects all Pyramid products that have an Ethernet port, plus all products that can connect to Ethernet capable products via fiber optic. The standard distribution of the software is an msi installer package for the Windows operating system (all versions from Windows XP onwards).



Linux version

Versions of the program for Linux are available on request. Because there are many Linux distributions that differ in some important details, it is recommended that you contact Pyramid directly for advice. A release for Linux is a set of files that must be copied to the target machine. A script is included that sets the path for library dependencies.



Tested Linux distributions

Pyramid cannot guarantee that the software will run on any particular Linux installation without some work. The standard file set has been installed and operated on the following:

- Ubuntu 14.04
- RedHat 7
- Fedora 28

An alternative file set has been installed and operated on the following:

- OpenSuse

Users who have experience with other distributions are encouraged to report their results to Pyramid so that other users can be informed.

C400 and rpcbind

Communication with C400 pulse counting detector controller product depends on the rpcbind library, which can be installed through repositories for their respective distros. Pyramid does not provide this particular library. If a window for the C400 is opened without rpcbind running, there is a popup message explaining that it needs to be installed.